

CARRYALL

CARRYALL 300




EFFICIENT DESIGN, TOUGH HAULING

With enough power to handle tough tasks, the Carryall 300 is the most dependable utility vehicle in its class. Each vehicle comes standard with a cargo box, trailer hitch, and plenty of room for customization so you can configure a car that'll get the job done right.



PREMIER MANEUVERABILITY

Take on tight corners with more power. Rack-and-pinion steering makes the Carryall 300 easy to handle, giving you a safer, more comfortable ride in any terrain.

	Gas	Electric
 Maximum Speed	17mph	17mph
 Horsepower	14 hp	3.3 hp
 Maximum Vehicle Capacity	800 lbs	800 lbs

CARRYALL ALWAYS TOUGH, ALWAYS READY

Club Car

CARRYALL 300 SERIES

CARRYALL

CARRYALL 300



The Carryall 300 Series can be accessorized for any need.

No team ever has just one job to do. Choose from the widest selection of accessories, including our VersAttach™ bed attachment system and configurations, to customize your new Carryall for your needs.



GASOLINE



ELECTRIC

OPTIONS & ACCESSORIES



Brush Guard



Canopy/Windshield



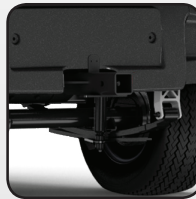
USB Port



Stakeside Bed



Curtis Cab



Rear Receiver Hitch



Customization



VersAttach™ Bed

	GASOLINE	ELECTRIC
ENGINE	Kohler EFI Gas	48-volt DC
HORSEPOWER	14 hp (10.3 kW) rated @ 3600 RPM per SAE J1940	3.3 hp (2.4 kW) rated, peak 13 hp (9.6 kW)
GOVERNOR GUARD	Ground speed	N/A
BATTERIES	12-volt 500 CCA 105 min reserve	Six 8-volt flooded lead acid
CHARGER	N/A	ERIC (650 W high frequency)
STEERING	Self-adjusting rack and pinion	Self-adjusting rack and pinion
FRONT SUSPENSION	Independent leaf spring with dual hydraulic shocks	Independent leaf spring with dual hydraulic shocks
BRAKES	Rear mechanical drum	Rear mechanical drum
PARK BRAKE	Foot operated, multi-lock	Foot operated, multi-lock
BODY AND FINISH	ArmorFlex® with automotive paint/clearcoat, aluminum finish	ArmorFlex® with automotive paint/clearcoat, aluminum finish
TIRES	20 x 10-10, 6-ply	20 x 10-10, 6-ply
BED L x W x H	36.2 x 47.5 x 10.5 in (92 x 121 x 27 cm)	36.2 x 47.5 x 10.5 in (92 x 121 x 27 cm)
WHEELBASE	65.5 in (166 cm)	65.5 in (166 cm)
GROUND CLEARANCE	5.2 in (13 cm)	5.6 in (14 cm)
FUEL TANK CAPACITY	5.5 gal (20.8 L)	N/A
CURB WEIGHT	817 lb (371 kg)	1105 lb (501 kg)
SPEED RANGE	15–17 mph (24–27 km/h)	5–17 mph (8–27 km/h)
LIMITED WARRANTY	3 yr/3000 hr limited powertrain/frame 2 yr limited remaining vehicle	4 yr limited battery 3 yr limited powertrain/frame 2 yr limited remaining vehicle